



2024 Annual Report

A Year of Service



2024 AFA LEADERSHIP

BOARD OF DIRECTORS



Bert E. Brodsky
Founder and Chair



Lee Brodsky
Vice Chair



Barry Berg, CPA
Treasurer



Gerald Angowitz, Esq.
Secretary



Luisa Echevarria



Nathan Halegua



Hon. Steve Israel



Arthur Laitman, Esq.



Stuart Rabinowitz, Esq.

MEDICAL, SCIENTIFIC & MEMORY SCREENING ADVISORY BOARD

Chair J. Wesson Ashford, MD, PhD | Peter Bayley, PhD

Nathaniel Chin, MD | Margaret Dean, APRN, NP-C

Lori Frank, PhD | Lee Hyer, PhD | Jeremy Koppel, MD

Monica Parker, MD | George Perry, PhD

Richard Powers, MD | Allison Reiss, MD

Frederick Schmitt, PhD

Soo Borson, MD, *emeritus*

Jeffrey Cummings, MD, ScD, *emeritus*

Sanford Finkel, MD, *emeritus*



President's Greeting

As I reflect on 2024, I am filled with gratitude and pride for what we have achieved. Thanks to your generous support and belief in our mission, we've empowered families, advanced research and improved care and quality of life for those impacted by Alzheimer's and dementia-related illnesses. Our commitment to the Alzheimer's community remains steadfast.

Because of your generosity in 2024, we were able to:

- Deliver **more than \$650,000 in grants** to fund **critical research**, support vital **community-based services** throughout the country and award scholarships to students impacted by Alzheimer's.
- **Launch "Allison," enabling AFA to provide 24/7 support** via a friendly avatar that answers questions about dementia, caregiving, brain health, memory issues and more. At any time during a session with Allison, users can request a call from a Helpline social worker for a more detailed, complex or personal conversation. Last year, our licensed social workers provided 35,000 minutes of support via phone, webchat, text message and email.
- **Break ground on AFA's first regional center**, the AFA Barbara Rabinowitz Education and Resource Center in Amityville, NY, to help address Alzheimer's growing public health crisis. The 11,500-square-foot, state-of-the-art center, the first of its kind on Long Island, will fill a significant service gap.
- Improve the standard of dementia care in our country by **educating more than 4,100 professionals while launching seven new continuing education courses** (20 in total now) and **two new certification programs**.
- Hold our **first Advocacy Day on Capitol Hill in Washington, DC**, where volunteer teams interacted with 535 U.S. senators and representatives.
- **Empower thousands of family and professional caregivers** through our Educating America Tour, Care Connection webinars and Fireside Chats.

As the number of those impacted by this devastating illness grows — more than 7 million Americans this year — the challenges continue. Thank you for making the vision of our founder and chairman, Bert Brodsky, a reality — that no individual or family faces Alzheimer's disease alone.

Charles J. Fuschillo, Jr.
President & CEO
Alzheimer's Foundation of America

AFA WELCOMED NEW LEADERSHIP



Monica Parker, MD
**AFA Medical, Scientific & Memory
Screening Advisory Board**

A family physician, researcher and dementia caregiver, Monica Parker, MD, has nearly four decades of experience in the medical field. She is an associate professor of

neurology at Emory University and leads the Outreach, Recruitment and Engagement Core (OREC) at the Goizueta Alzheimer's Disease Research Center. Her AFA-funded research promotes outreach and education for under-represented communities that would benefit from clinical trials, particularly African American men.

Charles J. Fuschillo, Jr., AFA's president and CEO, noted, "Dr. Monica Parker is a distinguished, accomplished and dedicated expert with extensive professional and personal experience caring for individuals living with dementia. Her knowledge and ability, combined with her passion and success at helping others and connecting people with services, will serve her well in her new leadership role and continue to be a great benefit to the board and AFA."

Parker has also served on the FDA's inaugural Patient Engagement Advisory Committee, the AAFP Commission on Continuing Professional Development and currently co-directs the NIH-funded ORE Core Steering Committee for the National Alzheimer's Coordinating Committee. Numerous accolades include the Georgia Legislature Women's Caucus "Yellow Rose" Award, *Atlanta Business Chronicle's* Healthcare Champion and recognition as one of Atlanta's Top Doctors in Family/Geriatric Medicine by *Atlanta* magazine.

AFA provided unwavering support.

“AFA’s Helpline licensed social workers were always there to provide guidance, support and answers to our questions. I still call them regularly.”

—Family Caregiver

One of AFA’s signature services, the **Helpline** is central to fulfilling our mission. Available seven days a week (9 a.m. to 9 p.m. ET) via phone, text and chat, the Helpline is staffed by licensed social workers specifically trained in dementia care, compassionately providing guidance and support and sharing community resources.

New this year, AFA support expanded 24/7 with a virtual **Helpline assistant, “Allison,”** a free, friendly, professional avatar designed to supplement AFA’s live Helpline. When a website user asks questions by typing text into a chat box or through voice interactions

“Thank you for your email and the time you spent with us yesterday. Having a starting point for our mother’s care is invaluable.” —Anne S.

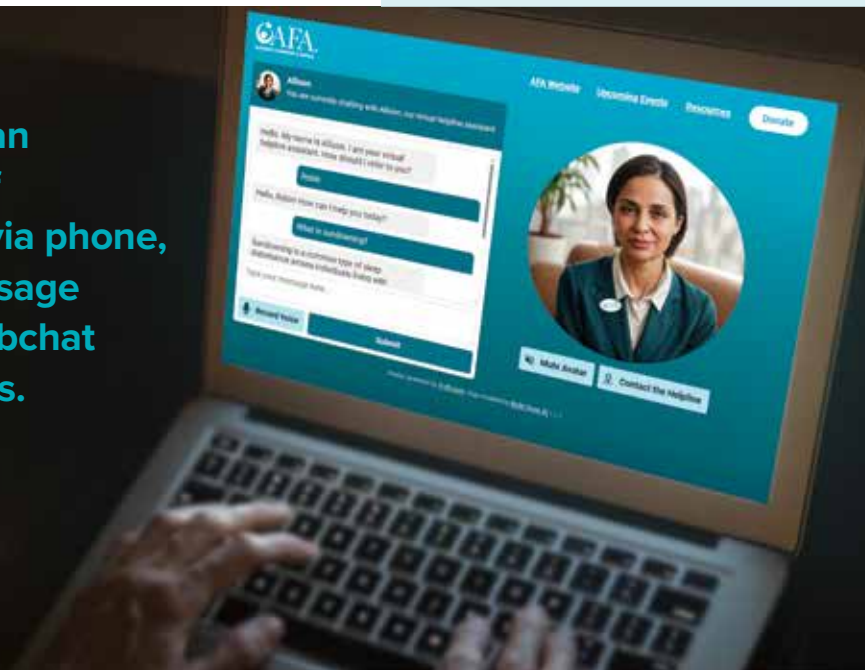
using their devices’ microphones, Allison provides instant feedback in major languages. At any time during the session, users can ask Allison to create a ticket to have a live Helpline social worker contact them to discuss more detailed, complex or personal issues. Allison is free, fully interactive, confidential and on AFA’s website (alzfdn.org).

The AFA Helpline delivered more than 35,000 minutes of personal support via phone, webchat, text message and email. The webchat is in 90+ languages.



“I cannot thank you enough for your time, your compassion and your wonderful words of wisdom. I hope to use those pearls of wisdom to help my mom feel loved and cared for.”

—Ben T.



Advocated for memory screenings.

AFA spearheaded **Alzheimer’s Disease: Early Detection & Diagnosis Matter**, the first-of-its-kind educational conference for healthcare professionals at the New York Academy of Medicine. Keynoted by Nathaniel Chin, MD, AFA Medical, Scientific & Memory Screening Advisory Board member, the conference addressed the importance of early detection of cognitive issues and ways to remove barriers to screenings.



- **AFA’s National Memory Screening Program conducted nearly 20,000 screenings** last year virtually, in person and online.
- **More than 2,587 partner sites** bring screenings directly to consumers where they live.
- **Nearly 40 community screening collaborations** included events with organizations like the Rosalyn Carter Institute for Caregivers, the NYC Department of Aging and the National Alliance for Caregiving.



Kick-off for NYC Council Member Erik Bottcher and State Senator Brad Holyman-Sigal sponsored educational and memory screening event.

AFA empowered with education.

AFA’s dedication to ensuring that no person faces Alzheimer’s alone is what inspired our annual **Educating America Tour (EAT): Alzheimer’s and Caregiving Conference**, now in its eighth year, to travel to 10 U.S. cities. Bringing together medical, scientific, legal and dementia care experts, the conferences provide critical information, resources and hope to thousands.

With two out of three women diagnosed with Alzheimer’s, AFA hosted its third annual **Women’s & Alzheimer’s: The Empowerment Forum**.

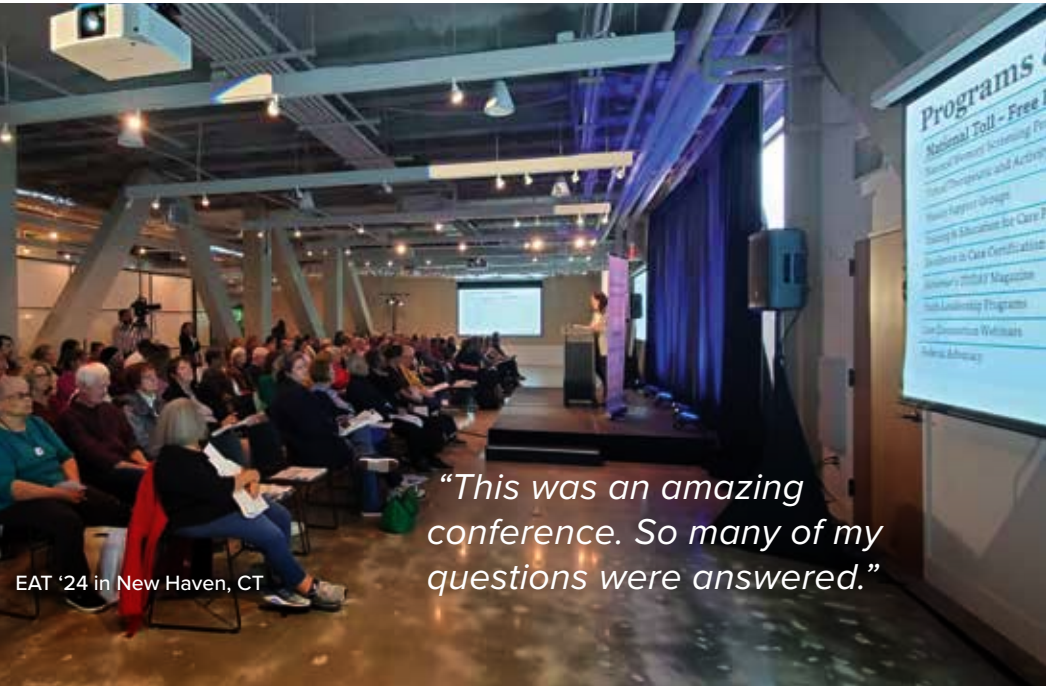
Passionate experts and family caregivers come together for candid and uplifting conversations.

Gratitude to our sponsors **Lilly, Eisai and Merck.**



2024 AFA CONFERENCES

- COLUMBIA, SC
- BIRMINGHAM, AL
- LOUISVILLE, KY
- SALT LAKE CITY, UT
- BOSTON, MA
- BOISE, ID
- ARLINGTON, VA
- NEW YORK, NY
- NEW HAVEN, CT
- TULSA, OK



NEW CERTIFICATIONS & ACCREDITATIONS

Committed to improving the standard of care for individuals living with Alzheimer’s and other dementia-related illnesses, **AFA’s Education and Social Services** department launched three new national certification programs this year.

For professionals:

- **AFA Certified Comprehensive Dementia Care Provider (CDCP)**
- **AFA Certified Dementia Care Partner (DCP)**

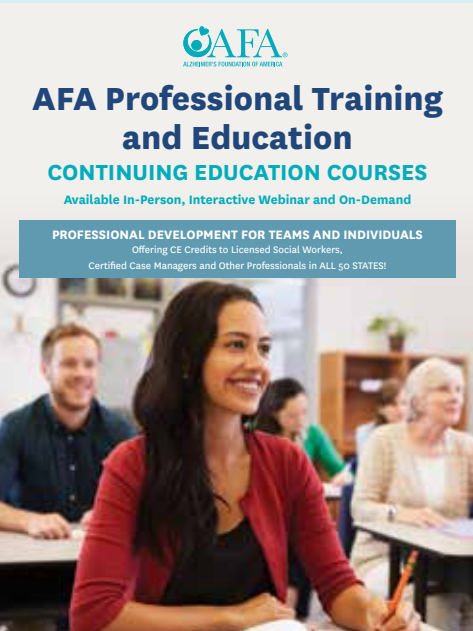
For organizations:

- **Professional Foundations: Organizational Training Program**



AFA’s Excellence in Care (EIC) national accreditation, now in its 12th year, continued to recognize outstanding care settings.

The **AFA Professional Training and Education catalog** has been revised and updated to include more than 20 continuing education courses.



MORE CARE CONNECTIONS & FIRESIDE CHATS

Nearly **6,000 caregivers and professionals** participated in AFA’S free monthly **Care Connection** webinar series, featuring topics such as how to create a dementia-friendly home, driving cessation, safe walking and the impact of hearing loss.



The **AFA Fireside Chat** series drew more than **900 registrants**, featuring Charles J. Fuschillo, Jr., AFA president and CEO, one-on-one with experts addressing the dementia diagnosis roadmap, the Medicare wellness visit, stigma and breaking down barriers to diagnosis and care.

Grateful to our sponsors **Eisai, Lundbeck, Merck and Otsuka.**



Charles J. Fuschillo, Jr., AFA president & CEO, and Dr. Jennifer Carson, School of Public Health, University of Nevada-Reno, discussing “Rethinking the Stigma.”

Funded vital services in local communities.

Through six grant-funding programs, **AFA provided more than \$252,000 in 2024** to enhance the lives of those living with neurodegenerative conditions across the country.

From wandering-prevention programs to initiatives that harness the healing power of the arts, these efforts support local communities served by AFA member organizations.

- Air Force Enlisted Village, Shalimar, FL
- Alzheimer and Parkinson Association of IRC, Vero Beach, FL
- Alzheimer’s Alliance of Smith County, Tyler, TX
- Alzheimer’s Alliance Texarkana Area, Inc., Texarkana, TX
- Alzheimer’s Orange County, Irvine, CA
- Alzheimer’s Service Center, Morrow, GA
- The Ark of SC, Summerville, SC
- Art for the Journey, Richmond, VA

“Opening Minds Through Art impacted over 2,500 residents and an estimated 7,500 family members.”
Art for the Journey, Richmond, VA



Art for the Journey, Richmond, VA, Opening Minds Through Art (OMA)

- Artisan Mind, Placerville, CA
- Auburn United Methodist Church, Auburn, AL
- Baker Senior Center, Naples, FL
- Bristol Virginia Sheriff’s Office, Bristol, VA
- Caregiver Relief of Bedford County, Shelbyville, TN
- Cass County Council on Aging, Cassopolis, MI
- Community Adult Respite Experience, Inc. (CARE Cafe), Albemarle, NC
- Connect: Where Love Never Forgets, Tuscaloosa, AL



Scottsdale Arts, AZ, Memory Lounge

- Crawford County Sheriff’s Department, Van Buren, AR
- The Dubin Center, Fort Myers, FL
- A Gift of Time, Georgetown, TX
- Hawaii Island Adult Care, Inc., Hilo, HI
- Hilarity for Charity, Los Angeles, CA
- Insight Memory Care Center, Fairfax, VA
- The John & Mable Ringling Museum of Art Foundation, Sarasota, FL
- The Life Center of Davidson County, Lexington, NC
- Norton Healthcare Foundation, Louisville, KY
- OPICA Adult Day Care, Los Angeles, CA
- One Site for Seniors, Inc., Coeur d’Alene, ID
- Orpheus Chamber Orchestra, Inc., New York, NY
- The Pastime Club, Minocqua, WI
- Pomfret Public Library, Pomfret, CT
- Respite Care Charleston, Charleston, SC
- Rx Ballroom, Ladera Ranch, CA
- Scottsdale Arts, Scottsdale, AZ
- Sibley Memorial Hospital Foundation, Washington, DC
- St. Mary’s Nursing Center, Inc., Leonardtown, MD
- Still Waters Adult Day Center, Indianapolis, IN
- Syracuse Jewish Family Service, Inc., Syracuse, NY
- Thrive West Central, Terre Haute, IN
- Washington County Sheriff’s Office, Marietta, OH



Hilarity for Charity, founded by Seth and Lauren Rogen, support programs for caregivers. Photo by: Jenna Bascom

“As a result of AFA’s Project Lifesaver grant, families in Miller and Cass Counties now have access to lifesaving technology, which has significantly improved the safety of individuals at risk of wandering.”
Alzheimer’s Alliance, Texarkana, TX



Opheus Chamber Orchestra, New York, NY



Connect: Where Love Never Forgets programming, Tuscaloosa, AL

“The Air Force Enlisted Village is grateful for AFA’s generosity in making the Eldergrow system possible for our community. The program has served as a transformative solution, providing interactive and therapeutic activities tailored to residents’ cognitive abilities.”
Air Force Enlisted Village, Shalimar, FL



Air Force Enlisted Village, Shalimar, FL, Therapeutic Horticultural Program

AFA supported the next generation.

In 2024, AFA’s Teen Alzheimer’s Awareness Scholarship contest awarded approximately \$50,000 to 71 high school seniors from more than 1,300 entries. All were impacted by Alzheimer’s or another dementia-related illness within their family or community.

Provided dementia-friendly programming.

AFA’s NYC Teal Room offered 170 free therapeutic and activity programs for 1,800 individuals living with dementia and their care partners.



2024 WINNERS

ESSAY



NICHOLAS HOFFMANN
Cary, NC
First Place
Duke University



ANALISE GREEN
Rainier, WA
Second Place
Cedarville University



CALDER VLADIKA
Golden, CO
Third Place
University of Oregon



STEPHEN SCLAFANI
Baton Rouge, LA
First Place
Holy Cross College



ANGELA MAGTOTO
San Diego, CA
Second Place
University of California



SUYASH DWIVEDI
Cummings, GA
Third Place
University of Pennsylvania



DANA TRITZ
Wisconsin Rapids, WI
Third Place
University of Michigan

VIDEO

“I loved how everyone had a chance to contribute and express themselves.”



“I’m committed to raising awareness of Alzheimer’s and dementia to honor my grandmother’s memory and to help others facing similar challenges. I am pursuing a neuroscience major.”

Suyash Dwivedi



AFA invested in innovative research.

AFA awarded more than \$350,000 in new research funding to transform our understanding of Alzheimer’s and develop innovative treatment therapies. This support will advance critical studies focused on reprogramming unhealthy neurons in the brain to restore cognitive function,

developing transformative medicines to effectively treat Alzheimer’s and exploring strategies to reduce the risk of dementia among combat veterans. The grants were awarded to three institutions: NYU Grossman Long Island School of Medicine, One Mind and Sheba Medical Center.

Advocated on Capitol Hill.

The department of public policy grew the mission of AFA on Capitol Hill with alliance groups, advocating for multiple pieces of legislation that supported caregivers, an increase in federal Alzheimer’s research funding, enhanced research for therapeutics and more public health initiatives through the CDC and other federal agencies.



A research project being conducted by NYU Grossman Long Island School of Medicine received \$68,351 for continued research into Alzheimer’s therapies based on the belief that neurons become dysfunctional due to metabolic problems early in the course of the disease, and that the plaques and fibrils are a result of a cascade of events that need to be altered at their inception. The project uses new technologies to extract vesicles from the blood that are shed directly from the brain to gain insight into what happens to the neurons in Alzheimer’s without having to do a brain biopsy. Comparing the content of these exosomes among the groups using genomic and proteomic techniques will help the team to capture changes early, to see where the divergence from healthy controls first occurs and to understand how it harms nerve cells.



One Mind will receive \$200,000, payable over a two-year period, supporting the continued expansion of its accelerator program. Funding will be used to support the development of transformative medicine to treat Alzheimer’s disease. This will expand the program AFA has funded in the past, the One Mind Accelerator, which backs visionary founders of early-stage startups with the catalytic tools — network, education and capital — to rapidly build robust, scalable and ethical companies that take innovations to market faster and with greater impact for people facing serious mental illness. One Mind projects this program will enable 15,000 to 45,000 people to receive cutting-edge treatments and services over the next five years.



Sheba Medical Center in Israel received \$100,000 in support aimed at reducing dementia risk among combat veterans living with post traumatic stress disorder (PTSD) and traumatic brain injury (TBI). Planned research studies include developing and implementing an agile, pragmatic trial to optimally treat these co-occurring conditions to improve short-term psychiatric outcomes and long-term brain health, including Alzheimer’s disease prevention.



AFA successfully **advocated for a federal funding increase for Alzheimer’s research**. The fiscal year 2024 (FY ’24) federal budget raised funding for the National Institutes of Health (NIH) by \$300 million, including a \$100 million increase specifically for Alzheimer’s disease and related dementias — bringing total funding to \$3.8 billion.



The Building Our Largest Dementia (BOLD) Infrastructure for Alzheimer’s Act

was signed into law in 2024. It directs the Centers for Disease Control and Prevention to strengthen the U.S. public health infrastructure to support and promote dementia risk reduction, early detection and diagnosis, prevention of avoidable hospitalizations and dementia caregiving.

AFA held its first-ever **Alzheimer’s Advocacy Day** on Capitol Hill, where our team of staff and volunteers interacted with all 535 congressional offices, including meetings with Bipartisan Congressional Task Force on Alzheimer’s Disease Co-Chair Senator Mark Warner (D-VA); Senator Jerry Moran (R-KS); Representative John Garamendi (D-CA); Representative Kat Cammack (R-FL); and Representative Jan Schakowsky (D-IL). We also participated in a legislative briefing with Senator Ed Markey (D-MA), a leader in the fight to cure Alzheimer’s, who mandated the development of the first comprehensive plan to address the disease.

AFA broke ground on a new education & resource center.

The **new state-of-the-art, multi-functional AFA Barbara Rabinowitz Education & Resource Center** at 149 Schlegel Blvd., Amityville, NY, will address the growing crisis of families dealing with Alzheimer's. To serve the estimated 61,000 Long Islanders living with the disease and their families, the center will provide therapeutic programming, education, professional training, support groups and memory screenings.

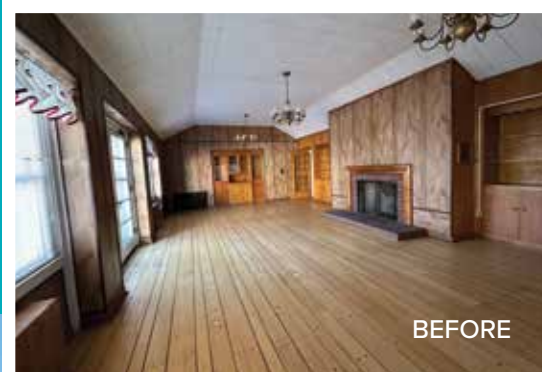
Help us build a community of care.
Naming opportunities still available.



Donate at alzfdn.org/tribute/
Learn more at afalongisland.org



Training Room

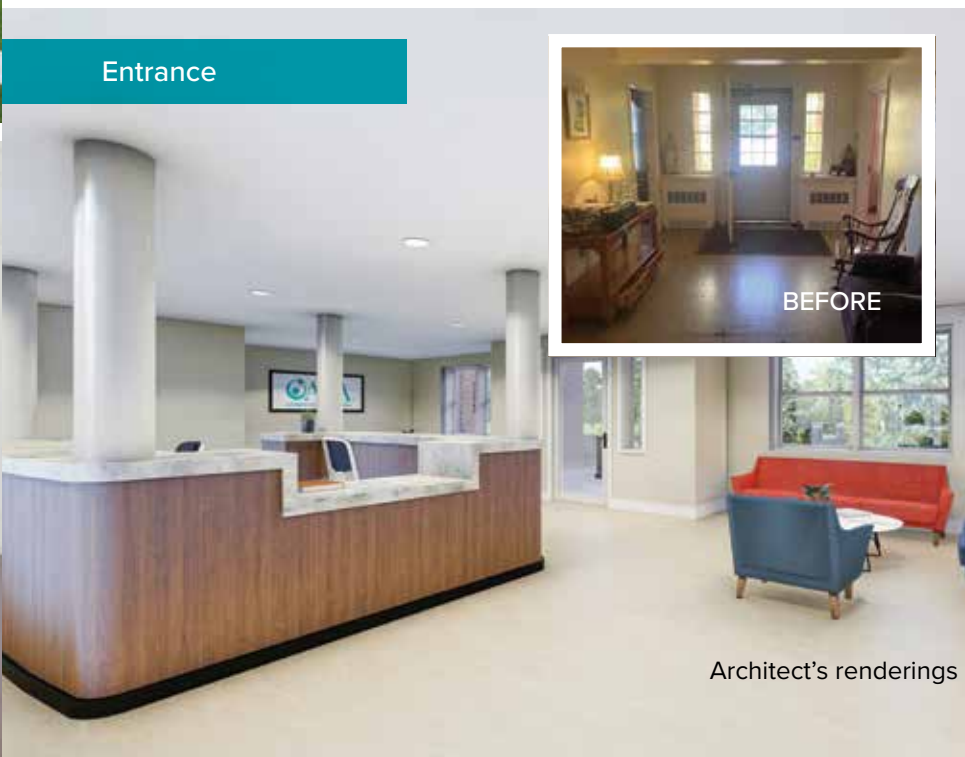


BEFORE

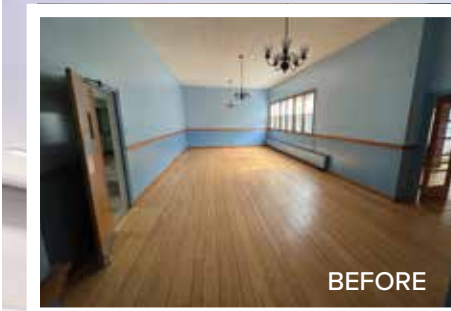


Support Group Services

Entrance



BEFORE



BEFORE

Community Education Room



AFA served as a national resource.

AFA generated more than **2,100 stories through TV, print, radio and online**, serving an audience size of **over 6.7 million**. Coverage addressed AFA programs and services (regional conferences, Project Lifesaver, memory screenings) and topics such as heat safety, wandering, caregiver stress reduction, brain health and planning for travel.



Alzheimer's TODAY, served a quarter of a million readers each issue, providing caregiver support, brain health news, human interest stories and inspiration.



NEW PUBLICATIONS



We're Here for You details the many ways our Helpline can support individuals and families.



Understanding Your Cognitive Screening Results by Nathaniel Chin, MD, AFA Medical, Scientific & Memory Screening Advisory Board Member.



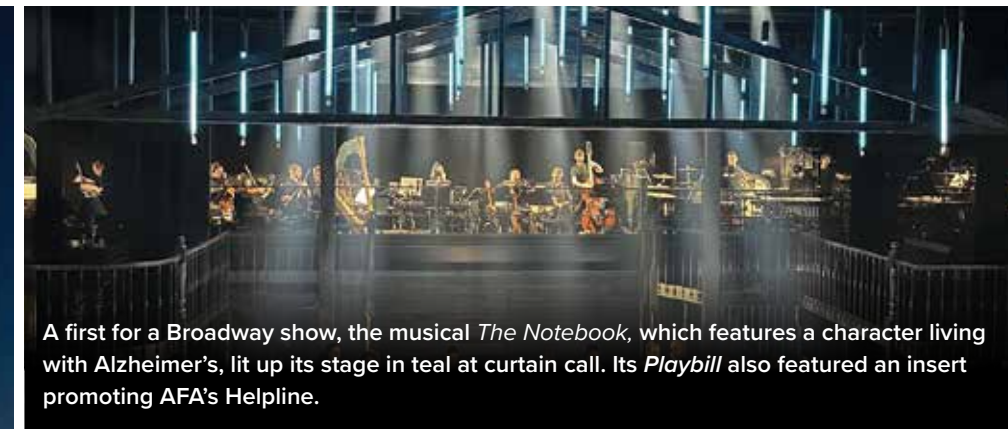
The Apartment guide, in Spanish, showcases how to have dementia-friendly home.

Raised awareness.

AFA's **Light the World in Teal** Alzheimer's awareness program set a new record this year, with over **1,350 sites in all 50 states and 16 countries participating** on November 1, kicking off National Alzheimer's Awareness Month. Participating sites included skyscrapers such as the Empire State Building, One World Trade Center and the Salesforce Tower; 33 major pro sports stadiums; 150+ government buildings (state capitols, Governor mansions, city halls); and major airports in Los Angeles, San Francisco, Houston, Phoenix and Philadelphia.



Empire State Building



A first for a Broadway show, the musical *The Notebook*, which features a character living with Alzheimer's, lit up its stage in teal at curtain call. Its *Playbill* also featured an insert promoting AFA's Helpline.



Wintrust Arena, Chicago, IL

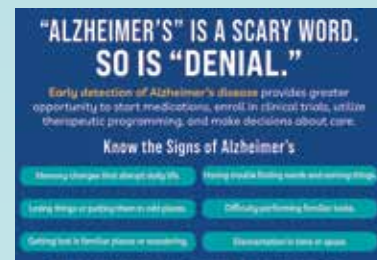


Boathouse Row, Philadelphia, PA

Over \$2 million in advertising was donated by **GCG Media, Captivate, Latcor Media, Lamar** and **TV and radio public service announcements**.



"Know the Signs," a newspaper ad, raised awareness about Alzheimer's and the AFA Helpline.



A new commercial, **"We All Know Someone with Alzheimer's,"** invited donations to support research toward a cure.



Inspiring AFA’s mission.

AFA’s 2024 Golf Classic at the Meadow Brook Club, Jericho, NY, raised over **\$310,000**.

Special thanks to sponsors: the **Carol and Edward Miller Family Foundation** (Platinum), **Jonis Realty/Citi Urban—Josh & Nathan Halegua** (Gold) and **BEB Capital—Bert and Lee Brodsky** (Silver).



At the '24 Golf Classic, Gillis Poll, AFA Chair Bert Brodsky (holding an air cannon for a special fundraising opportunity), Mel Ruskin and Bruce Meltzer.

The “Making Memories Social” hosted by AFA’s volunteer Professional Leadership Council (PLC) raised more than **\$100,000**. “It’s been humbling to see our PLC become what it is today,” PLC Chair Matt Solomon said.

Gratitude to PLC members, top row, from left to right, Josh Rieders, Matt Solomon (PLC chair), Zachary Goldstein, Daniel Fuschillo, Lane Manning, Jeff Bergmann and Brett Cohen. Second row, from left to right, Danielle Wattenberg, Julia Bodner, Kelli McGrath.



Special thanks to sponsors: **Eisai, The Bodner Family, Capital Group, Alliance Homecare, Trusthouse, Social Capital, Spear, AVR Optics, Dr. Alex, JP Morgan and Morrisons Pastry**.



Honorary AFA ambassador all-star pitcher **Dwight “Doc” Gooden** brought star quality to **AFA’S 2024 Walk in the Park** in East Meadow, NY, autographing baseballs and throwing out a ceremonial pitch. The event raised **over \$50,000**. “It’s a way for me to give back,” Gooden said, “and to honor fellow Mets legends Bud Harrelson and Tom Seaver, who both died of memory loss conditions.”

Special thanks to sponsors **Eisai, Axsome, GFP Real Eestate, Northwell Health, Lundbeck** and the **Halegua Family**.

WITH GRATITUDE TO OUR DONORS FOR EMPOWERING AND ENRICHING LIVES CORPORATIONS, ESTATES & FOUNDATIONS

\$999,999–\$100,000

Corporate Member




- | | | | |
|---|-----------------------------------|---|---|
| Brunhilde Wald Survivor’s Trust | Estate of Arthur R. Carter | GCG Media* | Kenneth F. Abrams/Alma B. Adams Revocable Trust |
| Captivate* | Estate of Barbara Bailey Bedevian | Jennie E. Schillaci Family Trust | Lamar* |
| Combined Federal Campaign | Estate of Linda Dodge | John and Jacquelyn Huecksteadt Family Trust | Latcor Media* |
| Critical Mention* | Estate of Paul Eugene Levesque | The John and Rosemary Brown Family Foundation | Marilyn Lurie Trust |
| Doris J. Dambrow Trust | Estate of Reinhold Vogel | Jose Moszkowski Trust | Phillip Bellia Trust |
| Ela Prakash Trust | Estate of Steven A. Harshbarger | | The Rabinowitz Charitable Foundation |
| Estate of Aphro and Harold A. Christopher | Estate of Tom Dishner | | |

\$99,999–\$50,000

Corporate Members



- | | | | |
|----------------------------------|--------------------------------|------------------------------|---|
| Alan W. King Revocable Trust | Delong-Sweet Family Foundation | Estate of Martine Brandner | Marcelle Johnson Living Revocable Trust |
| American Endowment Foundation | Estate of Carolyn D. Brown | Estate of Richard H. Parsons | Merck Foundation |
| Charles Schwab | Estate of John Oechsle | Extendicare | |
| Chesapeake Charitable Foundation | Estate of Joyce Konstantin | | |

\$49,999–\$25,000 Corporate Members			
			
The Boardman Family Foundation	Estate of John and Jacquelyn Huecksteadt	Jones Truck & Implement	Town of Babylon
Carol and Edward Miller Family Foundation	Estate of Mary Lee Masterson	The Marilyn Lichtman Foundation	U.S. Family Foundation Inc.
Carolyn Gilbert Living Trust	Estate of Robert J. Tolley	Myers Family Foundation	William D. Brooks and Jane R. Brooks Living Trust
Chaliz Family Trust	Estate of Virginia E. Basile	The Pearl Halegua and Nathan Halegua Family Foundation	
Estate of Ela Prakash	Hays Family Trust	Poses Family Foundation	
Estate of Elnora J. Westegaard	Ila V. Postrel	Schwab Charitable	

\$24,999–\$10,000 Corporate Members			
			
AERTC and NYS Smart Grid Consortium	Estate of Carl Gunnar Larsen	Jonis Realty Management	Pledgeling Foundation
Alliance Community Foundation	Estate of Eileen J. Leedy	L & L Foundation	Robert A. Balkin & Linda J. Balkin Living Trust
Athira Pharma Inc.	Estate of Howard B. Butler, Jr.	The Mabel M. Schaefer Revocable Living Trust	Rosenberg, Fortuna & Laitman LLP
BC Partners Advisors LP	Estate of Jeanne A. Moltkau	Merrill Lynch	Ruth Sarah Lee Foundation
BEB Capital – Bert Brodsky	Estate of June E. Hawkins	Mizel Family Foundation	Shelly Brody Trust
Bank of America Charitable Gift Fund	Estate of Patricia Elaine Champion	The Morton and Beverley Rechler Family Foundation Inc.	TIAA
The Bedford Foundation	Foundation of CA	National Christian Foundation Indiana	Team Zimm Family Trust
Bennett Family Charitable Fund	Greater Houston Community Foundation	National Financial Services LLC	The Thorson Foundation
Beren Therapeutics	HG Charitable Foundation	National Philanthropic Trust	Voodoo Doughnut LLC
Customers Bank	The Henry and Susan Garcia Foundation		William A. Redin Trust
Earl M. and Margery C. Chapman Foundation	Hovus Inc.	Novo Nordisk Inc.	Willkie Farr & Gallagher LLP
Estate of Brenda Laurretta Phipps	John C. Morrison and Eunice B. Morrison Charitable Foundation	Pershing LLC	Zero Six One Nine Foundation

Cont'd on next page

\$9,999–\$5,000		\$4,999–\$2,500	
322 Partners LLC	Jay and The Songwriters Joint	Aboff’s Paints*	The John and Anna Maria Phillips Foundation Inc.
Aaron H. Goldman Revocable Trust	Jewish Community Foundation of Greater Kansas City	Adirondack Beverages	John Belchers Charity Fund
Adeline and Bernard Lococo Charitable Fund	Jo Ellen Wilson Rev Trust	Alliance Homecare	Johnson Volk Consulting
The Allen Sackler Foundation	Johanna Foods Inc.	Ameriprise Financial	Joseph Fazzio Inc.
America’s Charities	Kimisis Theotokou Greek Orthodox Church	The Apatow-Mann Family Foundation Inc.	Leo V. Berger Foundation
American Cable and Rigging Supply	The Leshgold Family Fund	Arch W. Shaw Foundation	Marvin D. and Melissa U. Gill Family Foundation Inc.
Anchor Trading	Liberty Media	Benjamin and Seema Pulier Charitable Foundation Inc.	Mary Lou Downs Foundation
Arpin Charitable Fund Inc.	Mercury Public Affairs LLC	Beverly J. Johnson Foundation	McBride Consulting & Business Development Group
BTIG, LLC	Merrill Lynch, Pierce, Fenner & Smith Inc.	Bill Wolf Petroleum Corporation	NGL Insurance Group
CBS Sports	Metropolitan Abstract Corporation	Brooklyn Operating Company LLC	The Natter Family Foundation
Calpine JFK Energy Center	Michelle Canning and Rough Edges	Camden County Alzheimer’s Project Inc.	The Northern Trust Company
Capital Group	Minton Door Company	Charitable Adult Rides & Services Inc.	Oak Knoll Financial Strategies
Carahsoft Charitable Fund	New York Life Insurance Company	The Dallas Foundation	Par Plumbing Co. Inc.
Charities Aid Foundation America	Northwell Health	Davis Family Foundation	Plesser Foundation
Combined Jewish Philanthropies	Ralph & Barbara Edwards Family Foundation	Dime Community Bank	Raymond James & Associates
Corient	Ravitz Family Markets/ShopRite Supermarkets	Dreamgirl Cynthia Original Freestyle Cruise	Raymond James Charitable Endowment Fund
Cotswold Foundation	Sills Cummis & Gross, P.C.	The Eibshutz-Raphan Foundation	Renaissance Charitable Foundation
David W. Gurney Living Trust	Steel Equities	Estate of Harry Leven Residuary Trust	Render Family Foundation
The Drs. Tom & Lowell Williams Foundation	StoneX Financial Inc.	Estate of Robert J. Lynch	Stifel Charitable Inc.
Dvorak Trust	Suzanne Bettinger Fund	FJC: A Foundation of Philanthropic Funds	Thermafoam
EB Hulac Charitable Foundation	Thomas Reep Foundation	Farese Charitable Fund	VNS Health
The Edward L. Hennessy Jr. and Ruth S. Hennessy Foundation	Thoroughbred Spirits Group	First National Bank of Long Island	Wells Fargo Community Giving
Essex Trust of Essex Savings Bank	Triangle Building Products Corp.	Flagstar Bank	Zink Family Foundation
Estate of Barbara J. Richard	UBS Financial Services Inc.	Flatbush Council #497 Knights of Columbus	
Estate of Edgar O. Bunde	United Way Bay Area	The Gerleit Family Donor Advised Fund	\$2,499–\$1,000
Estate of Leonard Rivlin	Vanguard Clinical Inc.	Health Care Service Corporation Charity Custodial	AbbVie
Estate of Marie Overholser	von Borstel & Associates Inc.	Health Resources and Services Administration	Adrian Doris Pearsall Family Foundation
Fairfield County’s Community Foundation	Walker and Dunlop	JL HVAC Inc.	Agri-Basics Inc.
GFP Real Estate	Wells Fargo Clearing Services LLC	Jewish Communal Fund	Agri-Waste Technology, Inc.
Goldman Sachs	William and Kathryn Wandmacher Charitable Gift Fund		Alfred Leatherberry Testamentary Trust
Hornthal Family Foundation	Wunsch Foundation		AllianceBernstein
Illuminado Partners LLC	YHB Charitable Endowment		Alvin I. & Peggy S. Brown Family Charitable Foundation
James Purdy Barrow Foundation			

American Enterprise Investment Services Inc.
Anthony Schmidt Family Foundation
Arroyo Family Fund
Ascension of Our Lord Greek Orthodox Church Philoptochos Society
BNY Mellon Charitable Gift Fund
Bancker Construction Corp.
The Bank of New York Mellon
Beauty 21 Cosmetics Inc.
Benjamin F. Edwards & Company Inc.
Bessemer Giving Fund
Bluerock
Bon Secours Mercy Health
The Boston Foundation
Brancato Law Group PLLC
Bright Funds Foundation
Brownsburg Ballroom Dance Studio
Burton and Rose Kahn Family Foundation
CSX Transportation
Carco Builders Corporation
Castle Connolly Private Health Partners LLC
Cathedral Holdings
Childers-Lackland Foundation
Chuan-Hui Cordero Giving Fund
Chubb Charitable Foundation
The Cody Foundation
The Communities of The Management Trust, Southern California
Community Foundation of Sarasota
Cornell Dubilier LLC
CrossVue
The Curtis I. Kossman Foundation

Cushing Estates LLC
DCI Group
David F. and Margaret T. Grohne Family Foundation
The Dayton Foundation
Dessau Family Fund
Donald R. and Esther Simon Foundation
Dorothy F. Dederick Trust Administration
Ducks For Dementia
Dyno Nobel
Eagan Family Foundation Inc.
Eileen M. Rackliff Living Trust
The Ellen Wills Martin Foundation
Estate of Gerald “Jerry” E. Parrott
Estate of Gussie Shepherd
Estate of Jeffrey Paul Sherman
The Feuerring Foundation
Fidelity Charitable Gift Fund
Fratarcangeli Wealth Management
The Fred & Marcia Starkey Charitable Fund
Glen Head Country Club Charity Fund
Gloria Gray Foundation Inc.
Goldman Sachs Philanthropy Fund
Gorman Milling Co. Inc.
GotUCovered Sales & Marketing
The Gould Shenfeld Foundation
Greater Horizons
Greater Kansas City Community Foundation
Gregory & Marlene Thomson Donor Fund

Gurwin & Fay J. Lindner Residences
HFCA/CMS Alumni Association
Hayman Family Survivor Trust
Hunter Family Charitable Trust
ImpactAssets Inc.
J & B Henderson Family Gift Fund
J & S Auto Inc.
JJ & C Parceria LLC
JKS Charitable Fund
J.P. Morgan Chase Foundation
J.P. Morgan Securities Charitable Gift Fund
Jackson Family Giving Fund
Jackson National Life Insurance Company
Jewish Community Foundation of Greater Hartford Inc.
Jewish Community Foundation of Los Angeles
Joseph & Erma Paglianite Charitable Foundation
KPMG Gives c/o Bergen County’s United Way
Karen and Steve Sanger Fund
Katsky Korins LLP
Keats Family Charitable Fund
Keep Them Safe Foundation
Kenyon/Lynch Family Giving Fund
Landscapes USA
The Larry and Nannette Jordan Charitable Fund
Leila and Steven M. Gompertz Donor Advised Fund
Lillian B. Vash Family Fund
Linear Health Solutions

Maczko Family Gift Fund
Make My Donation Inc.
The Manny and Ruthy Cohen Foundation
Marian Inc.
Marine Spill Response Corp.
Mariner Foundation
Marshall, Gerstein & Borun LLP
McDonough Marine Service
Meyer Foundation
Mills Family Fund
The Mutlu Family Foundation
NAN Family Charitable Fund
NFP Property & Casualty Services, Inc.
National Christian Foundation, Alabama
National Christian Foundation, Houston
NorCal Reach
Northrop Grumman Corp. Charity Trust
Oakmont Manor LLC
PEC United Charities Inc.
Raymond and Marie Goldbach Foundation, Inc.
Raymond James Global Account
Real Life Ministries
Reliance Lodge No. 776 F & AM Whitestone Masonic Temple
Riverfront 402 LLC
Robert & Kathleen Lee Charitable Fund
Robert W. Baird & Company Inc.
Roger A. & Ruth A. Lund Charitable Trust
Rose Community Foundation

SEI Engineers Inc.
Sabean Family Foundation
Sidney Lansburgh Charitable Foundation
Sit Charitable Fund
Speece Thorson Capital Group, Inc.
Speramus Foundation
The Spot Restaurants
Sroka & Co CPAs
St. Clement’s Men’s Club
Steven & Mary Kitzman Family Fund
Stocken Family Foundation
Stoney Creek Fisheries & Equipment Inc.
Stratus Charitable Foundation
Sutter Home Winery
Symetra Life Insurance Company
Triangle Community Foundation Inc.
Tri-Flame Natural Gas Services Ltd.
Troutman Pepper Hamilton Sanders LLP
Turlington Family Charitable Foundation
The U.S. Charitable Gift Trust
United Way of Long Island
Vaughn Family Donor Fund
Vyuha Inc.
WRH Realty Services
Wallace & Irene Bronner Family Charitable Foundation
Walsh & Dickinson
The Weinreb-Berenda-Carter Foundation
Weisfeld Family Foundation

Wells Fargo Advisors LLC
Wesley G. McCain, Noreen Storrie & Malcolm W. S. McCain Family Fund
The Wilder Family Foundation
Zermount Inc.
Zissu Family Foundation

*Nonmonetary donations

INDIVIDUALS

\$999,000–\$100,000
Virginia Gorske
Jonathan Mossler
Zalman D. Newman
Jeannie and Bruce Nordstrom
Robert Strauss

\$99,999–\$50,000
LeRoy L. Erickson
Diane L. Kirkman
Marsha Simchen

\$49,999–\$25,000
Scott Anthony
Nathan Halegua
Frank and Barbara Rechterman

\$24,999–\$10,000
Mr. and Mrs. David Azus
Myrna and John C. Barton
Dorothy Bass
Aro Jack Bedevian
Marilyn J. Bishop
Eric Bodner
Kenneth J. Bohan
Jane H. Burchell
Matthew and Karen Crews
Claire D’Andrea
Mary E. Davis
Audrey and William Demas
Barbara Derbyshire
Eileen Dubin
Eduardo A. Esteves
Joan C. Evans
William J. Feuerstein
Andrew Thorson Foord
Robert Gingras
John Gutermuth, Jr., USAF
Stephen R. Hagerdon
Bernard Hamilton
Mary G. Harscher

Cheryl Kashan-Faiz
Lisa Pickering Knight
Arthur Laitman, Esq.
The Laskis Family
Richard W. Layding
Carl B. Lisa
Jeffrey L. Lomasky
Luisa P. Echevarria McNamara
Dr. Alfredo N. Munoz
Cynthia M. and Larry Murphy
Laura Okrent
John A. Perry
Robert Piszczor
Marilyn Annette Recupero
Daniel N. Romanow
Mr. and Mrs. Burton Rosenberg
Skip Rosskam
Carole E. Rush and Richard Andler
Tom and Carol Rusk
Vivien Savojni
Mr. and Mrs. Lowell E. Shepler
Robert Stover
Sherwin Suddreth
Chung S. Tang
Robert Tregemba
Connie Waddington
Gene and Jean Walker
Laurence Zuriff

\$9,999–\$5,000
David and Karen Basham
Stanley C. and Jennifer K. Beckelman
Allen Beeks
Mick and Peg Besse
Capt. Robert C. Betti
Wesley Brockhoeft
Bert E. Brodsky
Arland W. Buchner
Melody R. and James Burke
Mr. and Mrs. Joseph Burkett

Peter Buscemi and Judith Miller
Thomas Caniano
Rachel Cantor
George Leonard Cohen
Susan H. Cohen
John H. Cunningham
Scott DiTrapani
Rick Dunneback
Karen H. Eck
Jeff Epremian
Sanford I. Finkel, M.D.
Jeffrey Garner
Cedric C. Gayle
Janet Genest
Steven Glenn
Amanda J. Goddard
Gary and Jana Goodwin
Mary and John Gorte
Sharon and Kenneth Graboys
Linda Greenfield
John Mark Gregg
John and Joanne Hare
Stephen Helper
Cassie and Seth Hollander
Brad Kaplan
Patrick Joseph Kennedy
Kelsey Kool
Glenn Krevlin and Hillary Koota
Jean and Peter Lococo
Richard W. and Martha Lodge
Kathy and Shaun Mathews
Karen McClure
Patricia E. Meyers
Kira Michelson
Carolyn and Christopher Miller
David and Vicky Moore
Leonard Narimasu
Diane Newman
Daniel Oliver
Linda Lee Perretta

John Plut
Stuart and Nancy Rabinowitz
Adam S. Radosti
Richard and Barbara Reed
Sandy Remington
J. Greg Sargent
Michael Sawyers
Penny and Eric Schmitz
Stanton Peter Schneider
Lisa R. Sharfstein
Donald and Marguerite Shriner
Frederic and Barby Siegel
Don and Annie Smithmire
Callista Thompson
Gary and Tamar Tolchin
Carole Van de Kerckhove
Elisabeth K. Vanzura
Fred E. Waddell
Margaret V. Walker
Cathryn Waters
Debra M. Whitby-Norman
David P. Wilens
Sandra Young

\$4,999–\$2,500
Mike Aldredge
Alexander and Megan Ames
Mercedes N. Amin
Rita A. Andriacchi
Whitney and Matthew Barney
John Mitchell Beard, Jr.
Barry E. Berg
Lewis Black
Robert C. Bowers
Carolyn and Rob Brennan
Elizabeth Brya
Theodore Burmeister
Eric Cannata
Vincent Carlos and Sally Mujica
Nancy Chapman
Dr. James J. and Carol Chimento

Steve Coleman
Michael Conroy
Roland Coronado
Jean E. Corson and Patrick J. Tweedley
Leslie Milton Crouch
Gregg Deehan
Matt Dowling
Brian D. Driscoll and Susan Lee French
Dr. Robert Lamar Duffy
Michael Joseph Dwyer
Diana L. Edgar
Mr. and Mrs. Kenneth Faltischek
Michael L. and Judith Faltischek
Kimberly Fischer
Lance Garcy
Donna C. Garner
Claire Goldstein
Frank R. Griffiths
Arthur L. Gulovsen
Donna Anders Gustafsson
Cynthia Hardy
Robert B. Harvey
Christine Heim
Adrienne Hendler
Kenneth Hinett
Michele Mulrooney Jackoway
Thomas G. Jayne
Dorian S. and William Jordan
Jon Kaplan and Joyce Wilkerson
Norma Kessler and Philip Kaplan
Martha Lamb
Bernard Law
Kathy and Paul Leone
Joan P. Livingston
Richard C. Lujan
John and Betsy Malinak
Roger Marchese
Linda Marcotte

Melody Maxim	Keith Barnard	Dr. James M. Burns, Jr.	Diana D. Dicarlo	Lynn Gelsomin	Joseph H. Harris, Jr.	David and Jennifer Knickel	Rafael Martinez	John Nemitz	Mary Readel	Tatsuo and Terressea Shirane	Jacquelyn and Jim
Carol Meadows	Mr. and Mrs. Victor M. Barrionuevo	Steven Burns	Joe DiMedio	Paul F. Gerbosi	Wayne N. Harris	Rita Kohrman	Vivian and J.C. Mas	Dr. Elizabeth Neufeld	David G. and Nina Reigel	Lydia Simmons	Treviranus
Mr. and Mrs. Daniel Michalopoulos	Daniel L. Barry	John Byrley	Raymond Distefano	Kevin Gerrish	Chad Hartman	Patricia B. Konkle	Jeanne Mather	Charlotte and William Neumann	Jeanie Reitzell	Dr. Cheryl Slater	Shauna Trieb
Jane Niemeier	Thomas and Susan Barry	Richard Byrne	Mark and Virginia Donato	Peter Susan Giallorenzo	Mr. and Mrs. Mark Harvey	Walter and Marcia Kortschak	Mr. and Mrs. Donald T. Mathiesen	Connie C. Newman	Jo Ann Remshard	Maureen M. Sloan	Sharon Mayland Tsai
Arleen L. Olson	Johnny Basha	Kathleen W. Cannon	Steven and Patricia Donato	David S. Gibson	Steven Hauser	William A. Krantz	Oystein Mathisen	Deborah Newsome-Smith	Ian Reynolds	Barry and Laura Smith	Caroline Kelly Tuchowski
Sharon Schwarz Pafford	Steven and Kathleen Becker	Michael Capizzi	Barbara Dooley	Mary Jane Gillingham	Pierre and Martina Hayward	Bernice and John Kravitz	Scott A. and Suzanne M. Mayer	Buutap and Yenchi Nguyenphuc	Jane and Doug Rice	Dr. Howard Gary Smith	Marsha and Robert Turner
David L. Petro	Anders Beer	Stephen Carlin	Stewart Driller	Danielle Gillman	Scott Hefter	Eric and Betty Kuehfuss	Steven Mayfield	Leland J. Ringblom	S. Rintala	Karen F. and Victor C. Smith	Dr. and Mrs. I. Jeffery Turshen
Beverly A. Pintar	Harry R. Beeth	Robert Crawford Carlson	Jeanne Driscoll	Mr. and Mrs. William J. Gionesi	Benjamin E. Hermalin and Ruth A. Konoff	Donna M. Kunkel	Peggy Maznio	S. Rintala	Shari Ritterman	Stephen Smith	Mr. and Mrs. Matthew Twarog
Louisa Irma Rose	Blair Bennett	Roger Cassin	Adam Dublin	Alexander Gitomer	John Henry	Jane Leggett Lampkin	Dr. Susan A. McCarthy	Mr. and Mrs. Rivera	Richard J. Rogalski	John and Bonnie Sollazzo	Alexander Sasha Vaynerchuk
Randolph Roter	Mr. and Mrs. Gary Bergren	Carolyn Ramsey Christians	Barbara Ann Duckworth	Ted Goertzel	Susan M. Herron	Diane Lane	Linda C. McClatchy	Richard J. Rogalski	Kristin Anne Rognes	Robert E. Sowatsky	Alexander Sasha Vaynerchuk
Jeffrey Ry	Roland Bernardon	Arthur D. Clarke and Susan P. Sloan	Rich Dudley	Lance Goldberg	Edward E. Hershberger	Jerry De Lange	Mary Casillo McCormick	Antonio Romero	Victor and Eileen Rosenberg	Joan Spahn	Alan Vinegrad
Patricia Jean Sanders	Debra Ann and Peter D. Bernier	James G. Clawson	Patrick and Mariah Dwyer	Marc Gollob	Robert Herzfeld	David Langer	Yvonne McCrary	Connie Rose	Nicole P. Ross	Vickie Spindler	Kevin C. Walsh
Maxine Schmidt and David Watkins	Candace and Christopher Bignell	Sigrid Colgan	Douglas Earle	Robert L. Goostree	Dr. and Dr. Mack Himaya	Thomas Lanyon	Miriam McCue	Ann W. Spring	Caroline B. Rothberg and Paul M. Rothberg	Kathleen and John Spola	Judith Ward
Alan J. Schoppet	Andrew and Judy Binegar	Pat and Sue Collins	Mike and Yvonne Eddy	The Gorman Family	Jeanne Holtzman	Judy Lynn Lawler	Matthew McDaniel	Paul Stadfeld	Alina Roytberg	Dale Stahl	Frederick Warmbrodt
Walter W. Schwartz	Danny R. Blakely	Barbara and Jim Conen	Bonnie J. Ellington	Dr. Rene Earle Grace and Marilyn Grace	Alan Horwits	James D. Lax, M.D.	Nancy and William McDaniel	Dale Stahl	Lynn O'Reilly	Michael Steinberger	Charles Waters
Cheryl Silver	Bill Blankenship	Joseph Conlon	Benjamin Elliott	Roszann Graham	Susan Howard	Dennis S. and Kathy F. Lazar	James McDonald	Michael Steinberger	Brian Tang Ostenso	Mara Steiner	Danielle Wattenberg
Jamie Sprague	Eric Blumencranz	Teresa Conroy	Lynn Stephenson Elliott	Susan Marcia Graham	Mr. and Mrs. William V. Hubbard	Charles and DiAnn Lemman	Mr. and Mrs. Kenneth McDonald	Gayle Watts	Susan C. O'Toole	Carolyn Strano	Dennis Edward and Jamie Anita Webb
Mary Louise Stephens	Jill Harnick Bodian	Jamie and Alain Contreras	Carol Ellison	Barbara J. Granacher	Dr. Jennifer Ibrahim	Leslie G. and James L. Lenz	John McDonough	Gary Weede	Julie Patton	John D. Strong	Gary Weede
Alice M. Tepel	Whitney Bodine	Jessica Conway	Beth Ertel	Barbara J. Granacher	Richards Isherwood	Marcia and Richard Lewis	Paul A. and Trish A. McElroy	Andrew Weisbach	Alan Perrie	Arline Stuart	Andrew Weisbach
Marlene F. and Gregory J. Thomson	Gayle Bond	J. David Cope	Ronald E. Etchison	Mr. and Mrs. Michael A Grandin	Stephen Jamieson	Philip Lewis	Irma J. and Frank McNelia	Albert Kent Weymouth, Jr.	Donald J. Pertzborn	Sharon Sucher	Albert Kent Weymouth, Jr.
Richard and Marilyn Wagner	Jeanne S. Boretti	Janet Cope	Mr. and Mrs. Joseph Farnan	Mary Granfield	Paul Jay	Debra Lingle	Russell Meadows	Benton M. Wheeler	Elizabeth L. Peyton	Jill and Roger Sumner	Benton M. Wheeler
Grace Kung Wood	Quinn Borsuk	Madeline A. Cornelli	Mr. and Mrs. Marc A. Feinberg	Kristine and Mark Green	Arlis A. Jones	Jeff Lisowski	Michael V. Mele	Douglas J. White	Carroll C. Livingston, Jr.	Nan and Monte Szendre	Douglas J. White
Richard Woodbury	Richard George Botzler	William Cox	Nancy Ferens	Bruce Greenstein	Ronald Jones	Gilbert Litalien	Brian Mersereau	John Wilkes	Joanna and Ernest Lord, Jr.	Richard Tasker	John Wilkes
Henry and Marina Wright	James P. Bourgeois	Brian Crafts	John P. Finlay	Jerry Greenwood	Keith Stuart Kager	Carroll C. Livingston, Jr.	John Meyer	Mr. and Mrs. Keith Lawrence Will	Jan and Doug Love	Dorothy M. Taylor	Mr. and Mrs. Keith Lawrence Will
Lynn and Joseph Wynne	Robert M. Bowen	Debra and Kirk Crawford	Susan J. Fisher	Douglas Griffin	Charles Kahler	Joanna and Ernest Lord, Jr.	Debbie and Craig Miceli	Susan and David Wilson	Arthur Lu and Wai-Kuen Leung	Edwin F. Taylor	Susan and David Wilson
	Michael Bradford	Mr. and Mrs. Edward Curland	Ann Flanagan	Frank Grisez	Marc Andrew and Laurie Kahn	Henry Cameron Lucas, Jr.	John K. Miller	Theodore T. Witowich	Henry Cameron Lucas, Jr.	Betsy Templeton	Theodore T. Witowich
	Michael Bradford	Larry and Candace D'Addario	Catherine M. Flood	Robert Gordon Grubb	Sherrie C. Kaiser	Donald L. Lundholm	Paul Miller	Ann Wong and Lander Stoddard	Michael R. and Kathy Phillips	Alan W. Teppo	Ann Wong and Lander Stoddard
	Rita and Jack Bridwell	Jon D'Alessandro	Bryan Flynn	Richard Gruen	James Kalberer	Edward Lutt	Robert and Jean Miller	Dr. and Mrs. Robert P. Wulwick	Michael R. and Kathy Phillips	Tara Theis	Dr. and Mrs. Robert P. Wulwick
	Douglas Brinkmann	Jan Daniels	Linda Charlene Fogerson	Eric G. Guempel	Judith and Richard Kato	Heidi Lutz	Dr. and Mrs. Ronald D. Miller	Premal Yagnik	Michael R. and Kathy Phillips	Tina Thoman	Premal Yagnik
	Robert Brooks	Dr. Hannah Daughtrey	Thomas and Debra Foley	Norman Hackford	Julie Kellenberger	Mr. and Mrs. Robert D Lynch	Carolyn C. Mobley	Danna and Brian Yarmowich	Michael R. and Kathy Phillips	Larry and Pat Thomas	Danna and Brian Yarmowich
	Shelley Brouillette	Kathy N. Daum	Richard Freundlich	Walter Ervin Haisler	Thomas F. and Phyllis Kelley	Karen Rhueama Maddock	Marilyn Monter	Jane Zabeyda	Michael R. and Kathy Phillips	Tony Thomas	Jane Zabeyda
	Pamela and Jerry L. Brown	Daniel Davidowitz	Kwaku Frimpong	Jeff and Jodie Fritinger	R. and T. Halley	Carole Magee	Michelle Mordick and Thomas Milburn	Barbara Zelazo and Michael Scher	Michael R. and Kathy Phillips	Dr. Joshua Thompson	Barbara Zelazo and Michael Scher
	Mary Beth E. and Chris Browne	Corky Davis	Jeff and Jodie Fritinger	Richard Fromme	Ronald Hambly	Patrick Maguire	Robert and Jean Miller	Elsa Zelnick	Michael R. and Kathy Phillips	Dr. Joshua Thompson	Elsa Zelnick
	Richard and Christine Brunner	Jane C. Davis	Richard Fromme	Kenneth Frus	Jerrold Hamlin	Luanne Manning	Robert and Jean Miller	Joan R. Zuckerman	Michael R. and Kathy Phillips	Kimberly Thompson	Joan R. Zuckerman
	Robert H. Bruno	Jean S. and Dexter B. Dawes	Kenneth Frus	Joshua Gajdos	James Hammer and Cynthia Schirmer	James Scott Manthey	Dr. and Mrs. Ronald D. Miller	Daniel Shelley ZuHone	Michael R. and Kathy Phillips	Phebe Anne Thompson	Daniel Shelley ZuHone
	Alinda C. Bryant	Thomas Dawson	Jenine Gantz	Jenine Gantz	Suzanne E. Hanas	Nick Manzella	Ann B. Poole		Michael R. and Kathy Phillips	Mr. and Mrs. William Henry Thomson	
	Dennis Buckley	Mark D. DeBofsky	Paul C. Gaor	Paul C. Gaor	Roy Bruce Hand	Samuel Marcus	Bernard Portier		Michael R. and Kathy Phillips	Lavern and Nancy Timmer	
	Brandon Buikema	Ronald W. Dees	Carolyn Brophy Gasarch	Carolyn Brophy Gasarch	Jeffrey Hanks	Jo Ann Markham	Jon S. Powell		Michael R. and Kathy Phillips	Geraldine A. Torti	
	Thomas Bundy	Dianne DeLoria	Margaret M. Gates	Margaret M. Gates	Dr. Earnestine C. Hargrove	Nancy A. Marshall	Elyse Nathanson		Michael R. and Kathy Phillips	Michael and Pegi Touff	
	Elliott Burns	Connie DeRossi	Jeremy Geller	Jeremy Geller	James and Cindi Harris	Frank C. Marth	Janice and Steve Neff		Michael R. and Kathy Phillips	Louise Trabka	
		Kathleen Diak				Jacob Martin	Nicholas Nemecek		Michael R. and Kathy Phillips		

SUMMARY OF FINANCIAL REPORT

Statement of Activities – FYE December 31, 2024

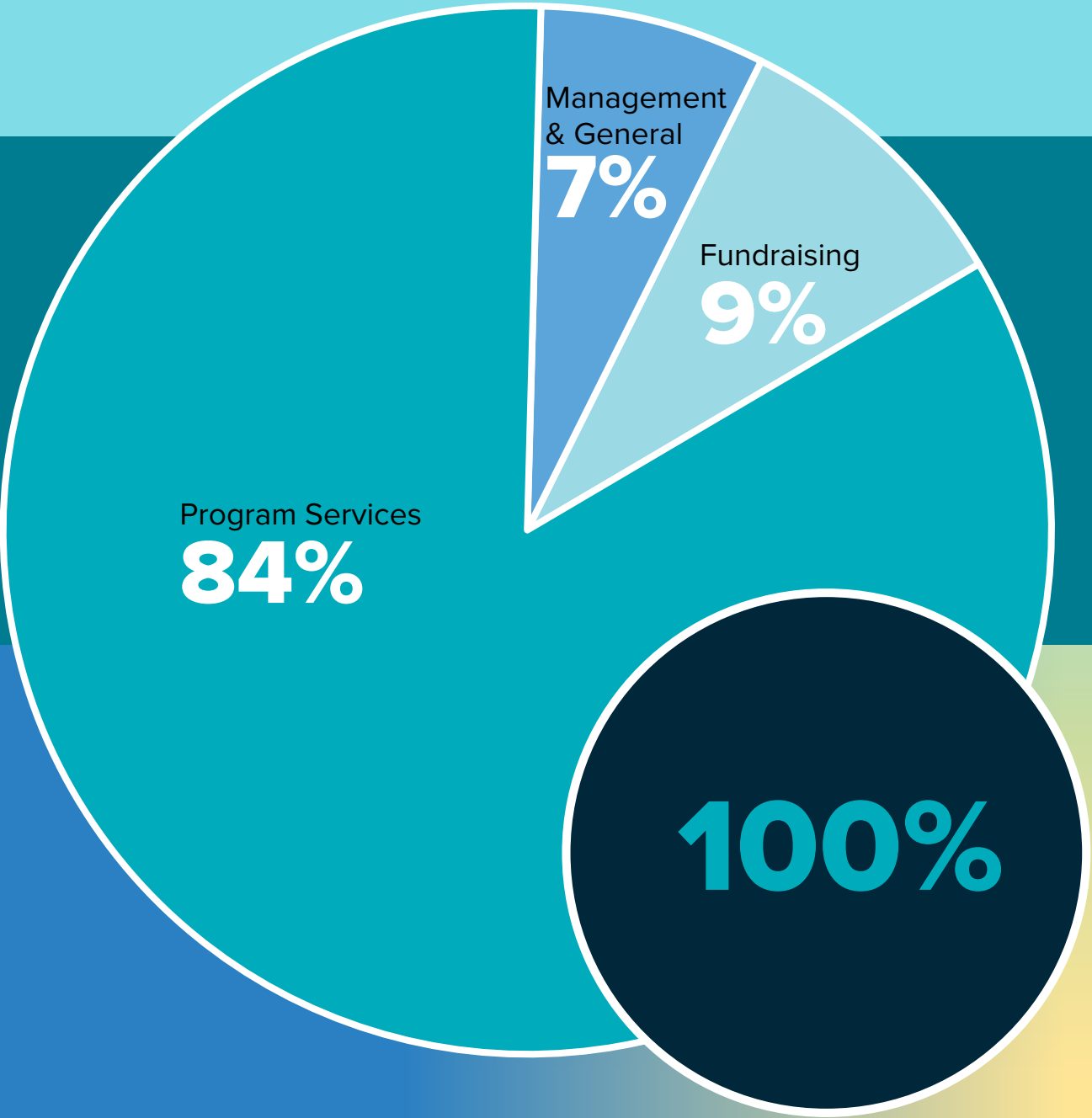
Support Contribution and Special Events

CONTRIBUTIONS	\$15,702,748
MEMBERSHIP	\$279,335
SPECIAL EVENTS	\$336,850
PROGRAM INCOME	\$58,518
GRANTS	\$1,831,289
INVESTMENT INCOME	\$5,085,360
IN-KIND CONTRIBUTIONS	\$1,920,265
TOTAL SUPPORT	\$25,214,365

Expenses

PROGRAM SERVICES – PUBLIC AWARENESS & SUPPORT	\$9,538,140
MANAGEMENT & GENERAL	\$824,314
FUNDRAISING	\$984,982
TOTAL EXPENSES	\$11,347,436
INCREASE/(DECREASE) IN NET ASSETS	\$13,866,929
NET ASSETS, DECEMBER 31, 2023	\$55,052,615
NET ASSETS, DECEMBER 31, 2024	\$68,919,544

How We Spend Your Charitable Contributions



All contributions designated for research go exclusively to funding research toward a cure and more effective treatments.

AFA holds Charity Navigator's highest rating of four stars for ten years for its commitment to fiscal responsibility and transparency.





Together, we can do more.

Join us to support families impacted by Alzheimer's and neurocognitive disorders. Your donations will be gratefully received at alzfdn.org/donate



The mission of the Alzheimer's Foundation of America (AFA) is to provide support, services and education to individuals, families and caregivers affected by Alzheimer's disease and related dementias nationwide, and fund research for better treatment and a cure.



Alzheimer's Foundation of America
322 Eighth Avenue, 16th Floor, New York, NY 10001
866-232-8484 | info@alzfdn.org | alzfdn.org